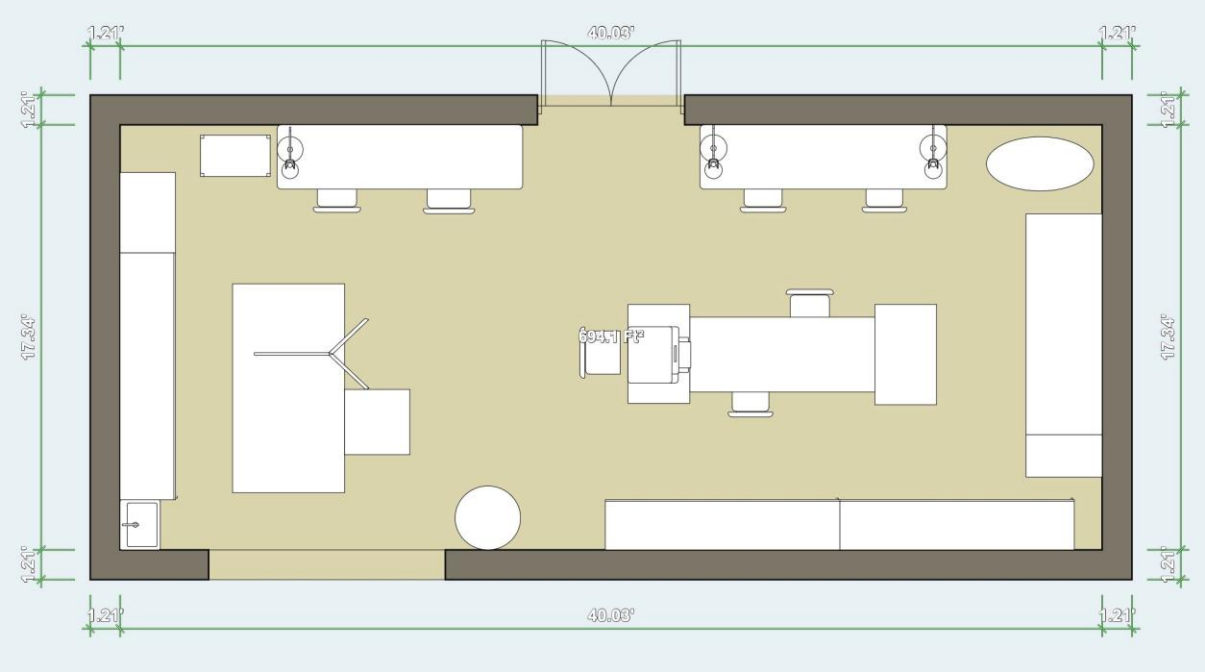


**Additional Info**

**Current Floor Plan**



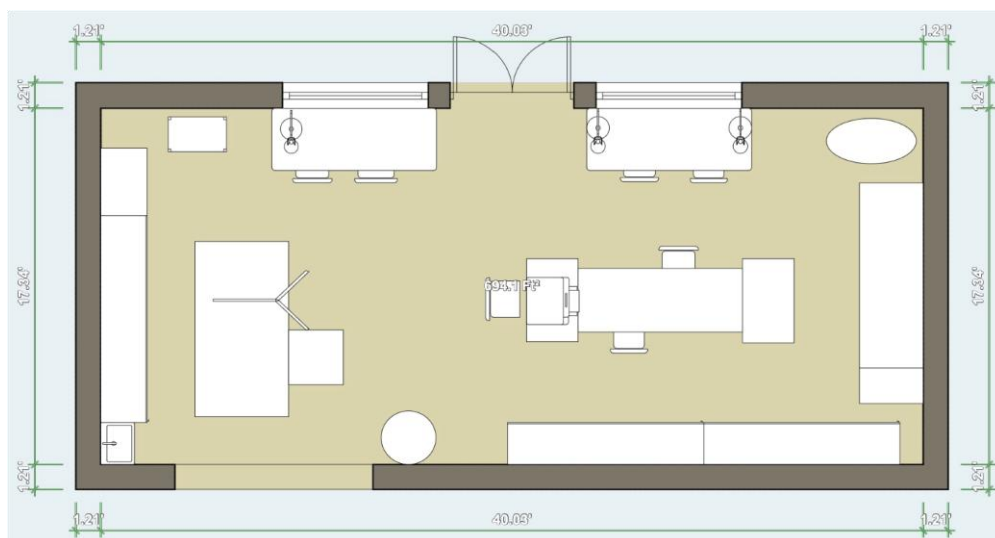
## Phase 1 Improvements

- Replace current front tables with height adjustable units (**\$7,600, \$3800 each**)
  - The current tables are heavily worn and are not designed for the heavy weight of some fossils. They are also not deep enough to accommodate larger field jackets and ideal ergonomics for the preparator. The current tabletops are also not chemical or scratch resistant, resulting in heavy damage and wear.
  - Alternative: Non-adjustable table (**\$900 each**)
- Reroute and hardline compressed air lines (**\$600**)
  - The current air lines are routed through the tables and around the door with a soft line. The middle of the room lacks air lines unless soft lines are run across the floor, creating a tripping hazard. An air cleaner and desiccator for clean air are also needed.
- Mount electrical drop downs (**\$100**)
  - The middle of the room lacks electrical outlets unless a cable is laid across the floor.
- Mount a dust collection system (**\$500**)
  - The current dust extraction system relies on two mobile dust extractors that work well but are unwieldy and cannot accommodate more than four preparators. They also do not extract chemical fumes, which need to be exhausted out of the lab.
- Replace the lab windows (**\$3,000**)
  - The current lab windows do not seal, which allows dust to leak from the prep lab and accumulate in the exhibit space. This also creates a noisy experience for museum visitors, especially when air scribes are in use.

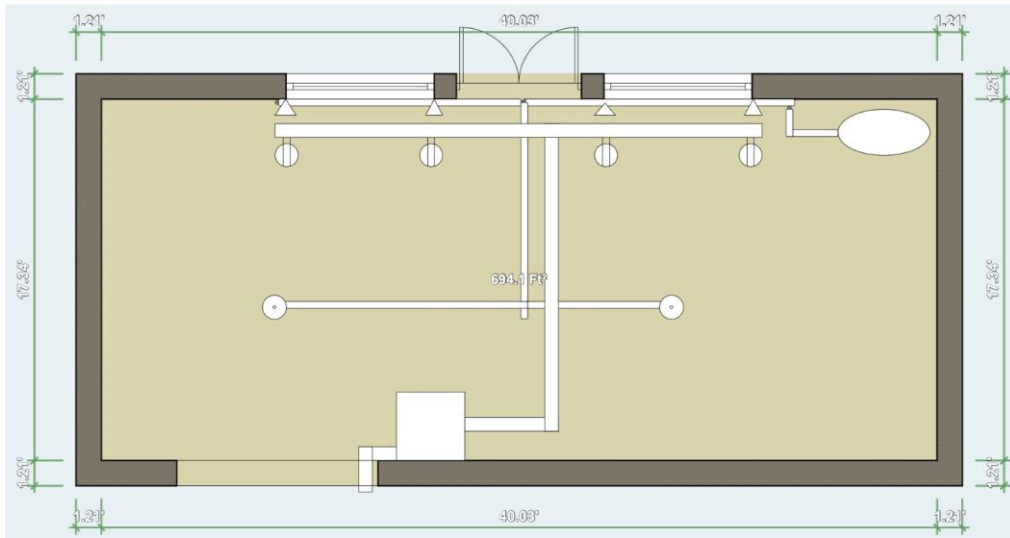
Phase 1 Estimated cost: **\$11,800**

Alternative Minimum Estimate: **\$6000**

### Phase 1 Floor Plan



# Phase 1 Ceiling Plan



## Phase 2 Improvements

- Add an additional non-adjustable table (**\$3,800**)
  - Because fossil material will need housings, labels, and photos after prep, a designated location for that is needed. This table will hold needed supplies and a cutting mat. (Alternative price: **\$350**)
- Replace Sink (**\$3,253**)
  - The current sink is small and lacks a sediment trap.
  - Alternative: new stainless-steel HD sink (**\$650**)
- Replace cabinets along north wall (**\$11,094; Installation: \$5,000; Freight: \$3,900**)
  - The current cabinets do not adequately hold materials and will need to be removed to fit the new sink. The cabinets are also in need of chem resistant countertops. These new cabinets would also allow for additional workstations.
- Replace center table with one that is height adjustable (**\$3,800**)
  - The middle table lacks adjustability and isn't designed to hold a lot of weight. (Alternative: Non-adjustable Uline table (**\$900**))

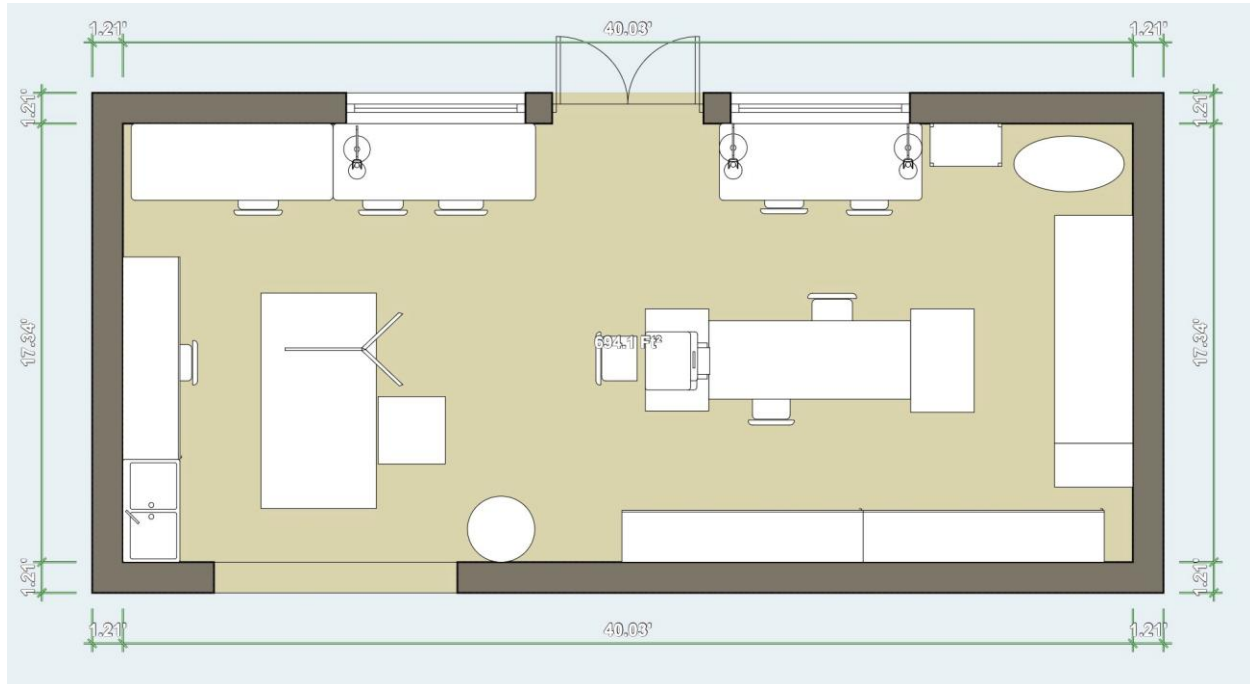
Phase 2 Estimated total: **\$30,847**

Phase 2 Estimate w/o Freight and Installation: **\$21,947**

Alternative Minimum Estimate: **\$21,894**

Alternative Min Estimate w/o Freight and Installation: **\$12,994**

### Phase 2 Floor Plan

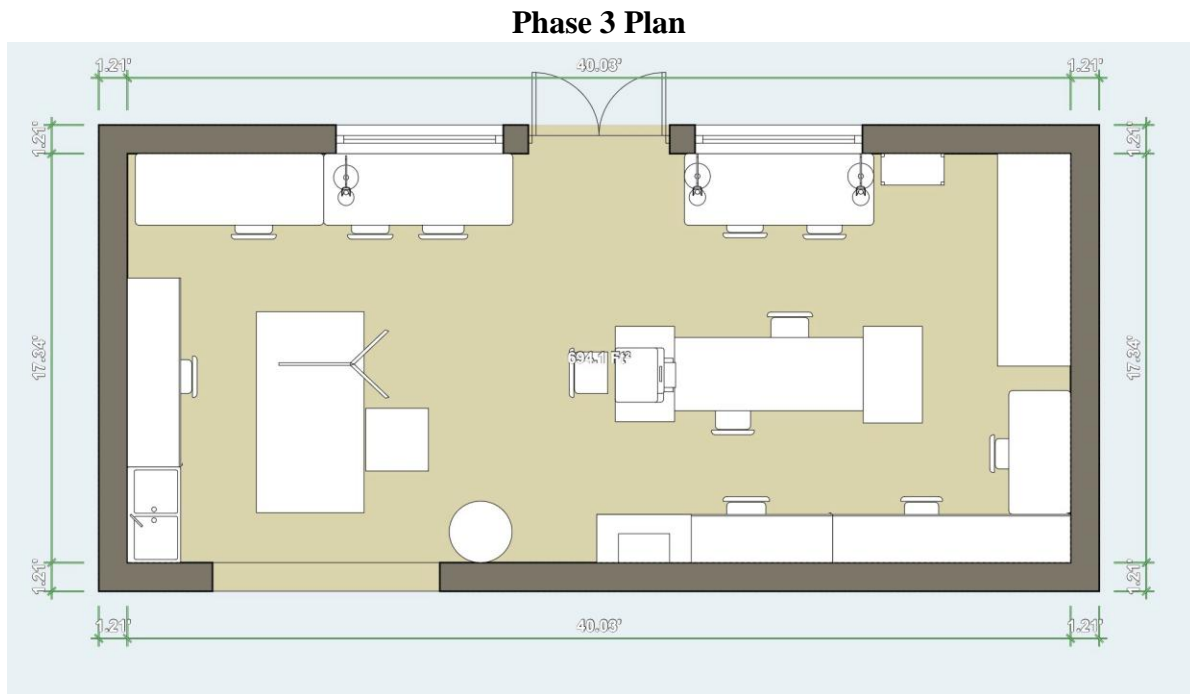


### Phase 3 Improvements

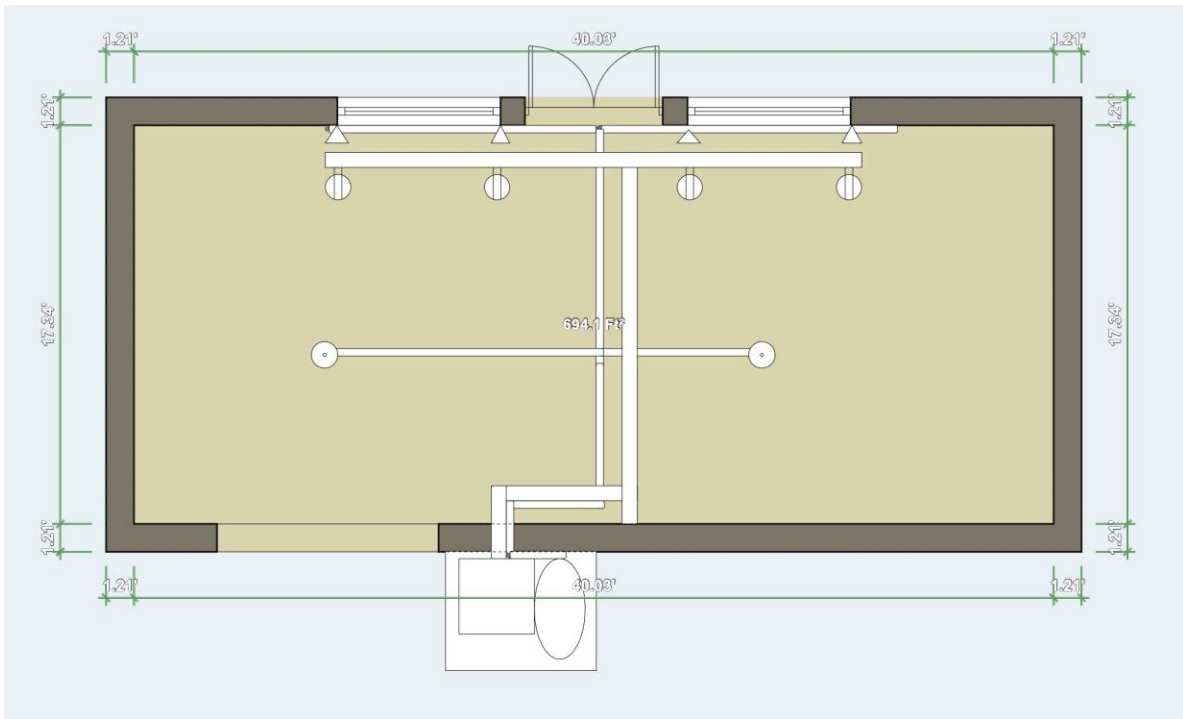
- Replace cabinets on west wall (**\$17,213; Installation: \$5,000 Freight: \$3,900**)
  - The current cabinets are not large enough to adequately hold supplies. Also, the upper cabinets sit directly on the lower cabinets, taking away vital space that could be used for additional workstations and equipment.
- Add a fume hood (**\$12,011**)
  - Needed to handle chemicals including acetone and acids.
- Dust extractor and compressor moved outside into a shed (**\$1000**)
  - The current compressor in the lab produces too much noise for health and safety standards. The unit is also over 80 years old, resulting in debris and water in the air lines. To free up space and lower the noise level in the lab, the new compressor (already acquired) could be moved into an external shed.
  - Like the compressor, the dust extractor units produce a lot of noise. Those could also be moved outside.

Phase 3 Estimated Total: **\$39,124**

Estimate w/o Freight and Installation: **\$30,224**



### Phase 3 Ceiling Plan



**Total Estimate: \$81,771**

**Total w/o Freight and Installation: \$63,971**

**Alternative Min Total Estimate: \$67,018**

**Alternative Min Total w/o Freight and Installation: \$49,21**